



Hours of Service

DOT Quick Reference Card

for use with the Qualcomm Mobile Computing Platform 100 (MCP100)

About Hours of Service

Hours of Service produces electronic driver logs that are fully compliant with Hours of Service regulations. When you request to see a driver's logs, you can expect the driver to hand you a portable display unit and this quick reference card. You can view log data in a graph or detailed view.

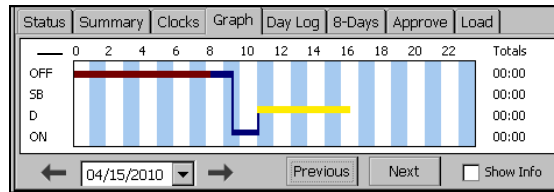
Note: Drivers are responsible for verifying the accuracy of their logs. Drivers cannot edit driving time on their electronic logs.

Header Line Information

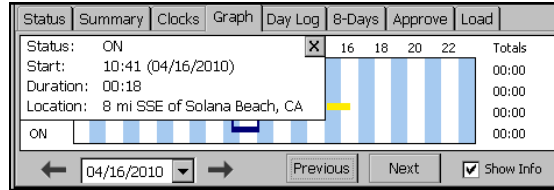
- The top line that displays the driver's name is always visible.
- A dot preceding the name indicates the driver's current status:
 - indicates the active driver; ○ indicates the inactive driver. To view a team driver, tap the drop-down list.
- The date is the DOT Day. Example: You see the prior calendar date if the driver's start time is 6 AM and it is currently 3 AM.
- The DOT clock displays the lesser of the times remaining on the 11-Hour, 14-Hour and 60-Hour or 70-Hour clocks.

Logs Viewed as a Graph

The **Graph** tab visually depicts the duration of each driver activity over the past 24 hours.



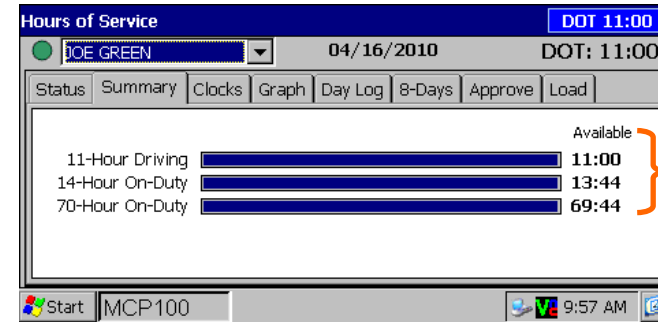
Tap a bar to see details of that activity. The details box remains open if you check the **Show Info** box.



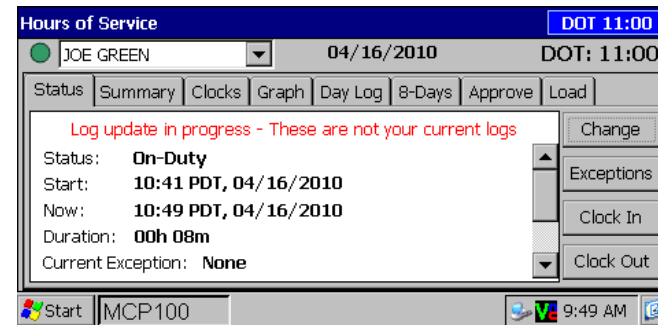
Tap the arrow keys to see prior day's data in the most recent duty cycle. An orange bar indicates that the duty status occurred during a system or sensor failure.

Summary and Status Tabs

The **Summary** tab shows the time remaining before the driver is in violation of each Hours of Service rule. **Status** shows other important driver information.



Time left before the driver is in violation



- The driver's current status
 - The time it started
 - How long in this status
- Scroll down to see the driver's start of day and today's mileage

© 2010 QUALCOMM Incorporated. All rights reserved. Qualcomm, Qualcomm Enterprise Services, and Knowledge Unleashed. Business Unbound. are registered trademarks of QUALCOMM Incorporated. All other trademarks are the property of their respective owners. Specifications are subject to change without notice. Qualcomm endeavors to ensure that the information in this document is correct and fairly stated, but Qualcomm is not liable for any errors or omissions. Published information may not be up to date, and it is important to confirm current status with Qualcomm. This technical data may be subject to U.S. and international export, re-export or transfer ("export") laws. Diversion contrary to U.S. and international law is strictly prohibited.

April 2010

80-JA314-1 Rev. E



WARNING

Driver - Do not use while vehicle is in motion.
Use of display unit while driving will cause distraction and loss of vehicle control which may lead to serious injury or death.



Hours of Service

DOT Quick Reference Card

for use with the Qualcomm Mobile Computing Platform 100 (MCP100)

Day Log Details

The **Day Log** tab lists the driver's activities over the past 24 hours. Use the scroll bar on the right and the arrow buttons at the top to navigate through the records.

Status	Start	Duration	Location
D	10:59	00h 03m	8 mi SSE of Solana Beach, CA
✓! ON	8:41	02h 18m	8 mi SSE of Solana Beach, CA

- All start times reflect the time zone of the driver's home terminal.
- ✓ indicates an approved record.
- ! means there was a system or sensor failure at the time of this record. Drivers are instructed to keep paper logs in the event of a sensor or system failure. Upon receiving a notification that the problem is resolved, drivers can then resume using Hours of Service.

WARNING Driver - Do not use while vehicle is in motion. Use of display unit while driving will cause distraction and loss of vehicle control which may lead to serious injury or death.

8-Days (7-Days) Driving and On Duty Totals

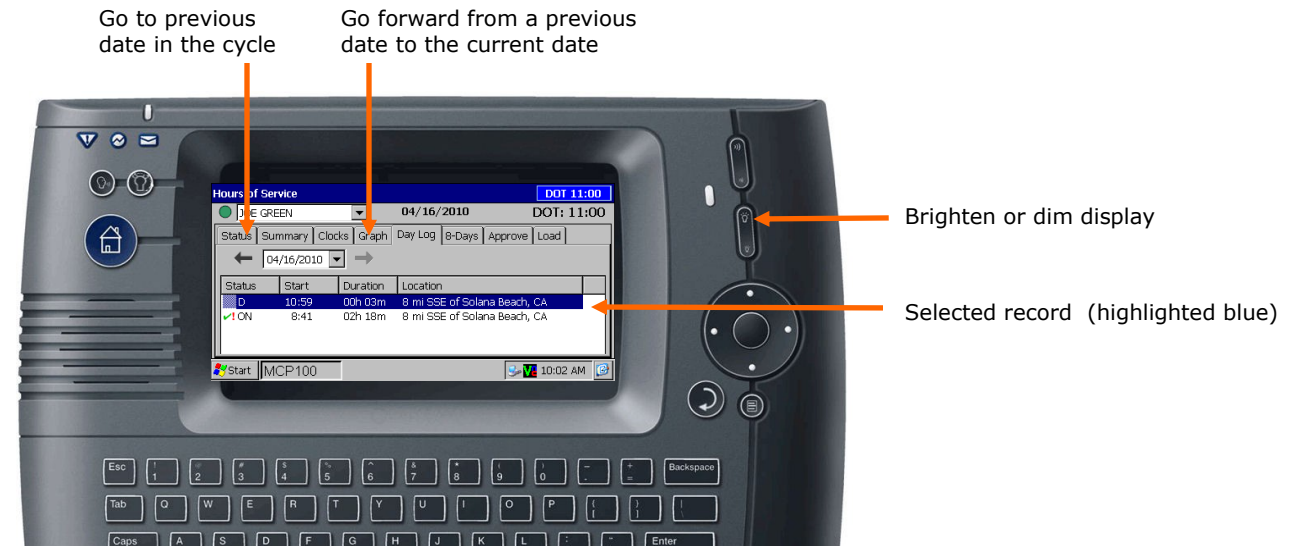
This tab shows the total miles driven and the total driving and on-duty time for each day in the most recent duty cycle.

Date	Mileage (mi)	Driving	On-Duty
04/16/2010	0.0	00h 00m	00h 25m
04/15/2010	0.0	00h 00m	00h 00m
04/14/2010	0.0	00h 00m	00h 00m
04/13/2010	0.0	00h 00m	00h 00m
04/12/2010	0.0	00h 00m	00h 00m
04/11/2010	0.0	00h 00m	00h 00m

Request Logs as a Hard Copy

If you prefer a hard copy of the driver's logs, you can request that the logs be faxed to your office. Provide the driver with your fax number and a name to enter in the **Attention** field.

Status	Summary	Clocks	Graph	Day Log	Fax	Approve	Load
Please provide the following information:							
Fax #	<input type="text" value="619 296-2774"/>			Request			
Attention	<input type="text" value="M. Smith"/>			Cancel			
Region	<input type="text" value="USA"/>						



MAY CONTAIN U.S. AND INTERNATIONAL EXPORT CONTROLLED INFORMATION