



Transportation Services

Virtual Display for use with MAS100

File:
SETUP—Adjust Volume
EXIT—Exit Virtual Display

View:
Use to control the look of the Virtual Display

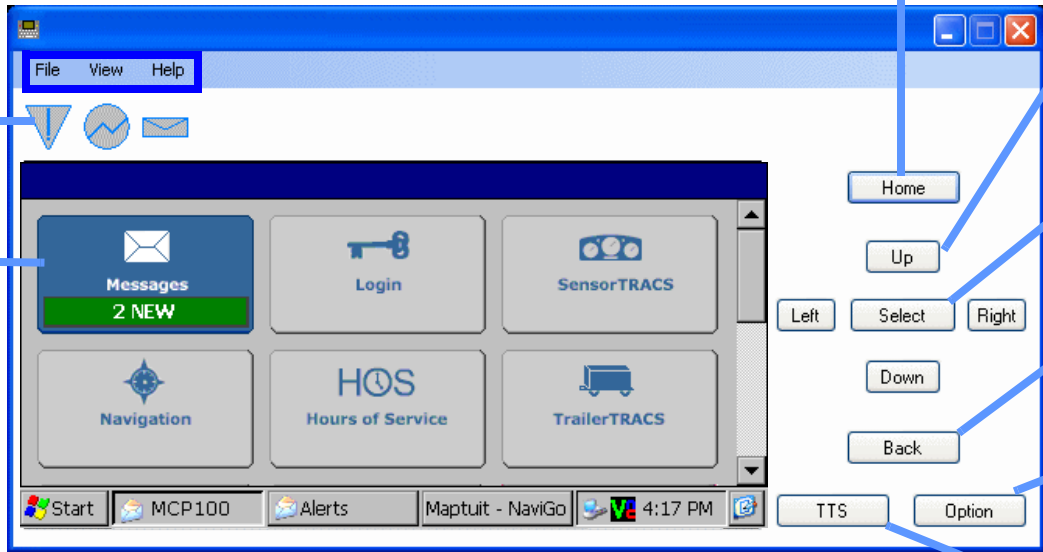
Help:
Virtual Display Tutorial
Your Company Help

Home:
Return to Virtual Display

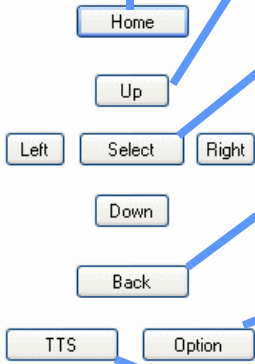
Up—Down—Left—Right:
Use same as keyboard arrow keys

Indicator Lights:
ALERT
NO SIGNAL
MESSAGE

Messages:
SEND Messages
RECEIVE Messages



Virtual Display

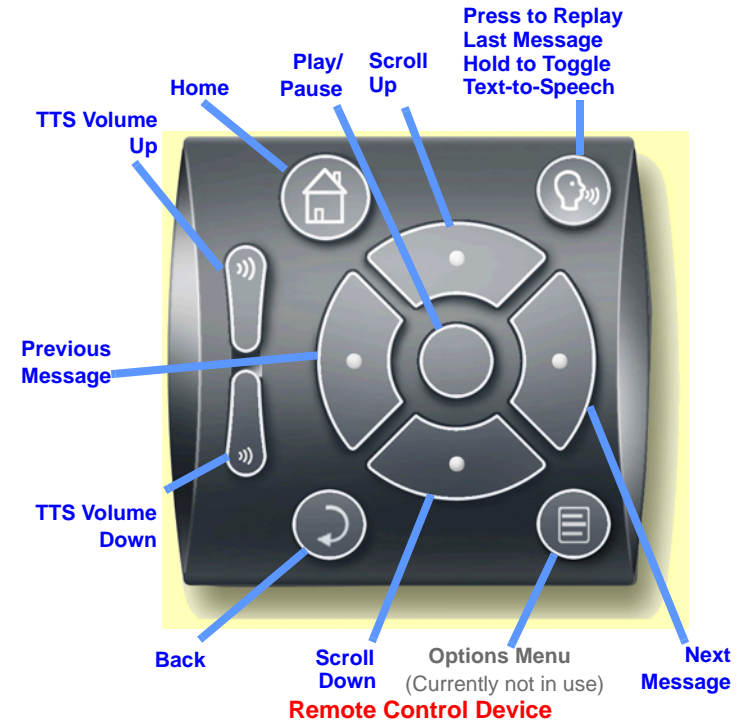


Select:
Open highlighted Menu Option/Messages

Back:
Go back one level

Option:
Currently not in use

Text-to-Speech (TTS):
Enable TTS
Disable TTS



Remote Control Device

Copyright © 2010 QUALCOMM Incorporated. All rights reserved.

Qualcomm, QES, Qualcomm Enterprise Services, SensorTRACS, and TrailerTRACS, are registered trademarks of QUALCOMM Incorporated in the United States and may be registered in other countries. All other trademarks are the property of their respective owners. Specifications are subject to change without notice. Qualcomm endeavors to ensure that the information in this document is correct and fairly stated, but Qualcomm is not liable for any errors or omissions. Published information may not be up to date, and it is important to confirm current status with Qualcomm.

This technical data may be subject to U.S. and international export, re-export or transfer ("export") laws. Diversion contrary to U.S. and international law is strictly prohibited..

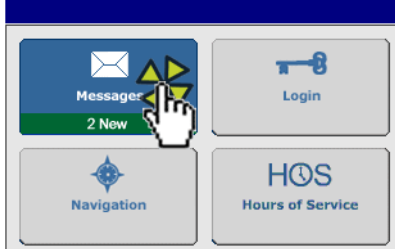
WARNING Driver - Do not use while vehicle is in motion. Use of display unit while driving will cause distraction and loss of vehicle control which may lead to serious injury or death.



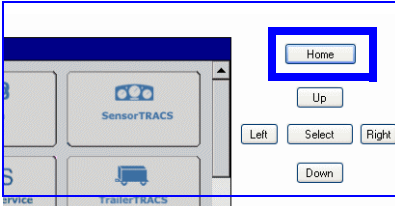
Virtual Display for use with MAS100

Transportation Services

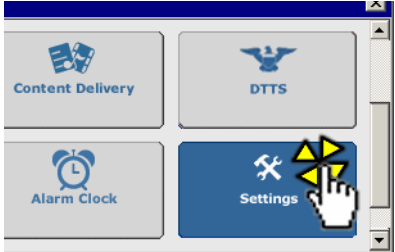
Start here to Send and Receive MESSAGES



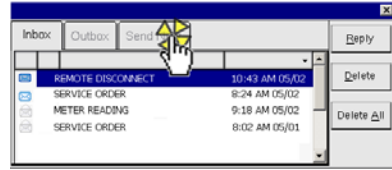
Press Home key



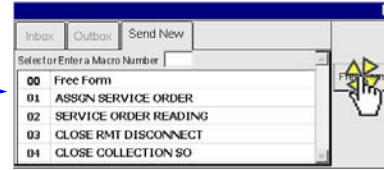
Scroll down to Settings to Set TIME ZONE



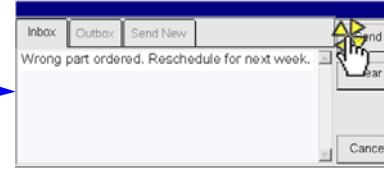
SEND Freeform Message



Click SEND NEW tab



Click FREEFORM button

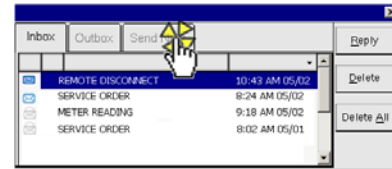


1. Type message 2. Click SEND



Click YES

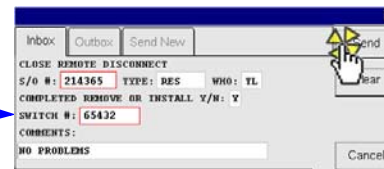
SEND Macro (Canned) Message



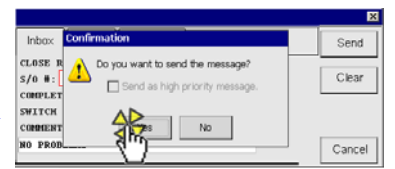
Click SEND NEW tab



Double-click macro to send

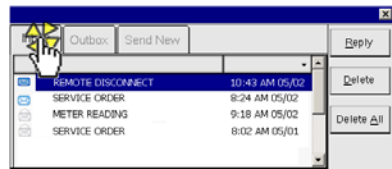


1. Fill in fields 2. Click SEND

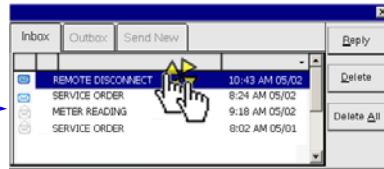


Click YES

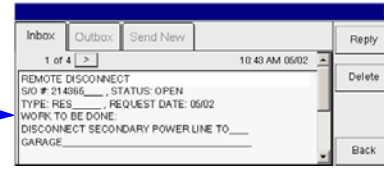
READ Message



Click INBOX tab

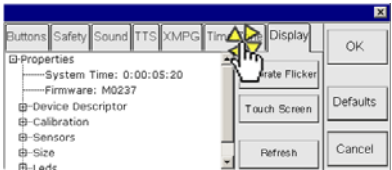


Double-click message to read

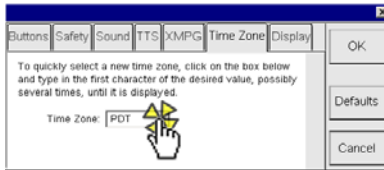


Read message

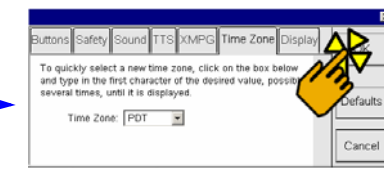
SET Time Zone



Click TIME ZONE tab



Select Time Zone from box



Click OK

WARNING

Driver: Do not use while vehicle is in motion. Use of display unit while driving will cause distraction and loss of vehicle control which may lead to serious injury or death.

MAY CONTAIN U.S. AND INTERNATIONAL EXPORT CONTROLLED INFORMATION.